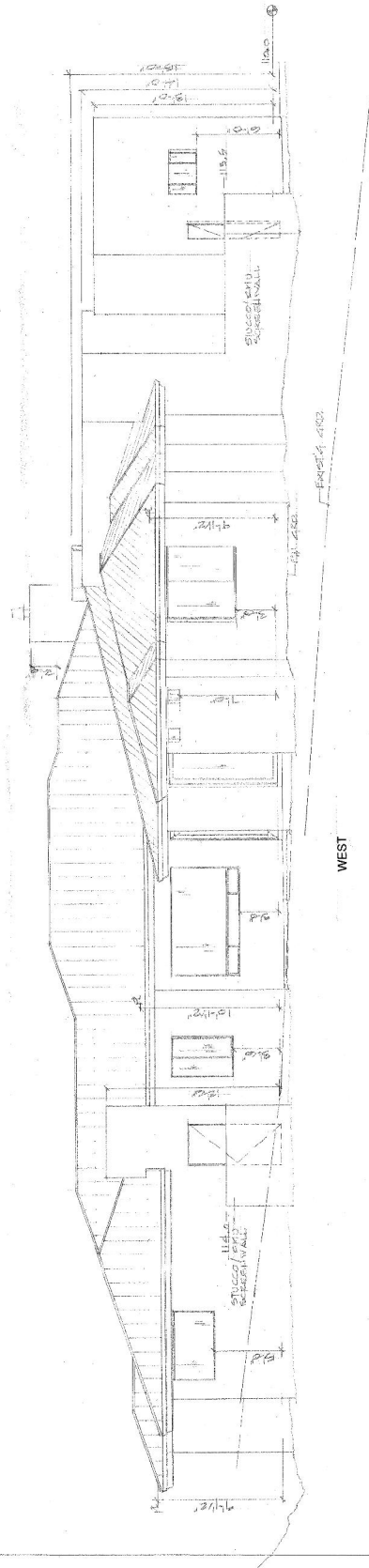


EAST



WEST

* STUDIOS TO BE MATCHED TO SUBMITTED CORNERS, U.N.O. H.C. ES. 604-1194
 * TRUCK DOOR TO BE MATCHED TO SUBMITTED CORNERS, U.N.O. H.C. ES. 604-1194
 * PAINT GARAGE DOORS, OUTTER DOWN SPOUTS, ELECTRICAL SERVICE METERS, ETC. TO MATCH STUCCO - U.N.O.

REVISIONS FOR
 2014 CONSTRUCTION PERMITS
 YAMAWA COUNTY BUILDING SAFETY

A NEW HOME BY EAGLE CLIFF DEVELOPMENT	SHEET	4
LOT 1 RED ROCK COVE	OF	9
DATE: 03/20/11 SCALE: 1/8" = 1'-0"	JOB NO.	2706
DR. BY: E. SEITZ	NO.	
PROVISIONS: # 1-1-B		